

## Metered Rack PDU

### **Rack PDU, Metered, Zero U, 20A, 200/208V, (20) C13 & (4)C19**



APC Metered Rack PDU , Input: 208V , Input Connections: NEMA L6-20P , Cord Length: 10 feet ( 3.05 meters ) , Output: 200V, 208V , Output Connections: IEC 320 C13,IEC 320 C19

**Includes:** Installation guide, Rack Mounting brackets, Toolless Mounting Kit, User Manual

**Standard Lead Time:** Usually in Stock

#### **AP7840 Features**

Toolless Mounting Capabilities	Units do not require additional tools to mount into APC NetShelter VX, which allows the users to quickly and easily mount units in the rear of the enclosure.
Vertical Mounting Capabilities	Easily mounts vertically in racks or enclosures and occupies zero U of valuable rack space, which allows more equipment in the rack. Units that mount vertically are optimized to fit in a NetShelter VX enclosures.

#### **Metered Rack PDU Features & Benefits**

Availability	
Remote Management Capabilities	Full-featured network management interfaces that provide standards-based management via Web, SNMP, and Telnet. Allows users to access, configure, and manage units from remote locations to save valuable time. Associated with this feature is the ability to quickly and easily upgrade the firmware via network download to installed units for future product enhancements. (Note: Only applicable for units categorized as Networked).
Local Current Monitoring Display	The aggregate current draw per power distribution unit is displayed on the unit via a digital display. The local digital display helps installers avoid overloaded circuits by providing a visible warning when the current draw is close to the maximum amperage draw of the strip.
Alarm Thresholds	Define alarm thresholds in order to avoid overloaded circuits. Network and visual alarms inform the user of possible problems. (Note: Only available on units with the current monitoring capabilities. Please see SKU specifications for availability)
Load indicator LED	Indicates overload and warning conditions based on the user-defined alarm thresholds. Alerts users of potential overloaded circuits.

**Integrates with InfraStruXure Central** An IT-ready, scalable monitoring system that collects, organizes, and distributes critical alerts, surveillance video and key information, providing a unified view of complex physical infrastructure environments from anywhere on the network

**Flash Upgradeable** Quickly and easily upgrade firmware via network download for future product enhancements. Eliminates the need to replace products already installed in the field when new features are released. (Note: Networked units only)


**Agility**

**Rack-Mountable** Includes horizontal, vertical, and toolless-mount varieties. Puts power where it is needed most - in the racks near the equipment.


**Single input power source** Supply power from one branch whip to multiple pieces of equipment, conveniently powering rack-mount equipment. Saves time and money during installation by using one branch whip and standard connections.

**Wide range of input and output connections** Product family includes a variety of input and output connections to distribute 120V, 208V, or 230V power to multiple outlets. Having a variety of inputs and outputs allow users to adapt to varying power requirements. APC offers units that bring up to 14.4kW using a single branch whip.

# Output

Nominal Output Voltage	200V,208V	
Maximum Total Current Draw per Phase	20A	
Output Connections	(20) IEC 320 C13 (4) IEC 320 C19	
Always on Outlets	24	
Overload Protection	No	

# Input

Nominal Input Voltage	208V	
Input Frequency	50/60 Hz	
Regulatory Derated Input Current (North America)	16A	
Input Connections	NEMA L6-20P	
Cord Length	10 feet (3.05 meters)	
Number of Power Cords	1	
Maximum Input Current per phase	20A	
Load Capacity	3328 VA	

# Physical

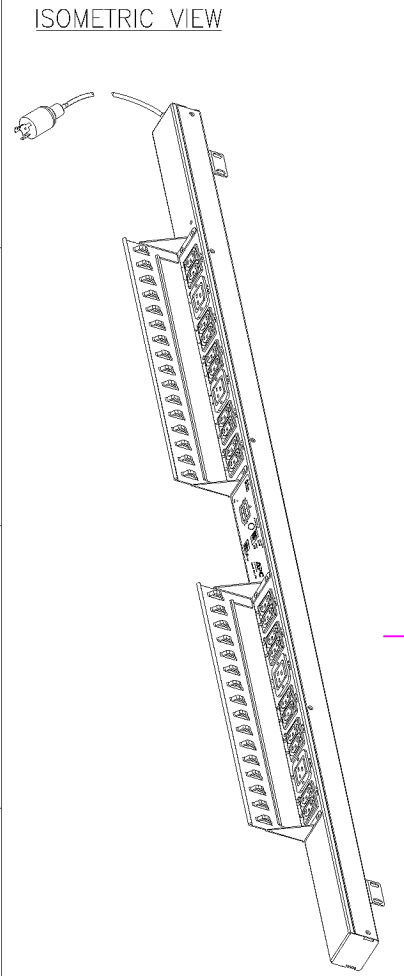
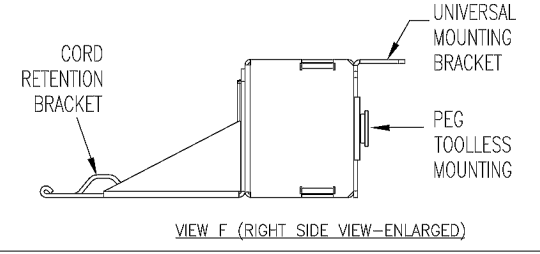
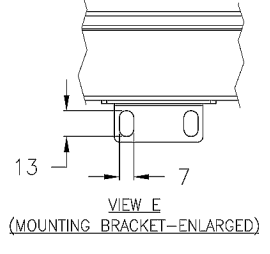
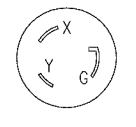
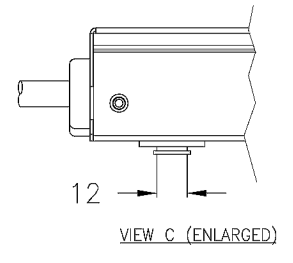
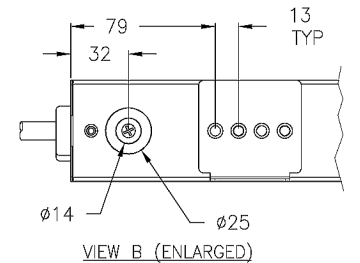
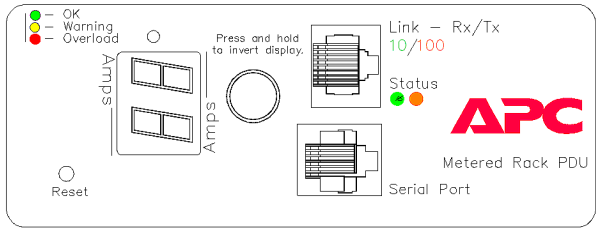
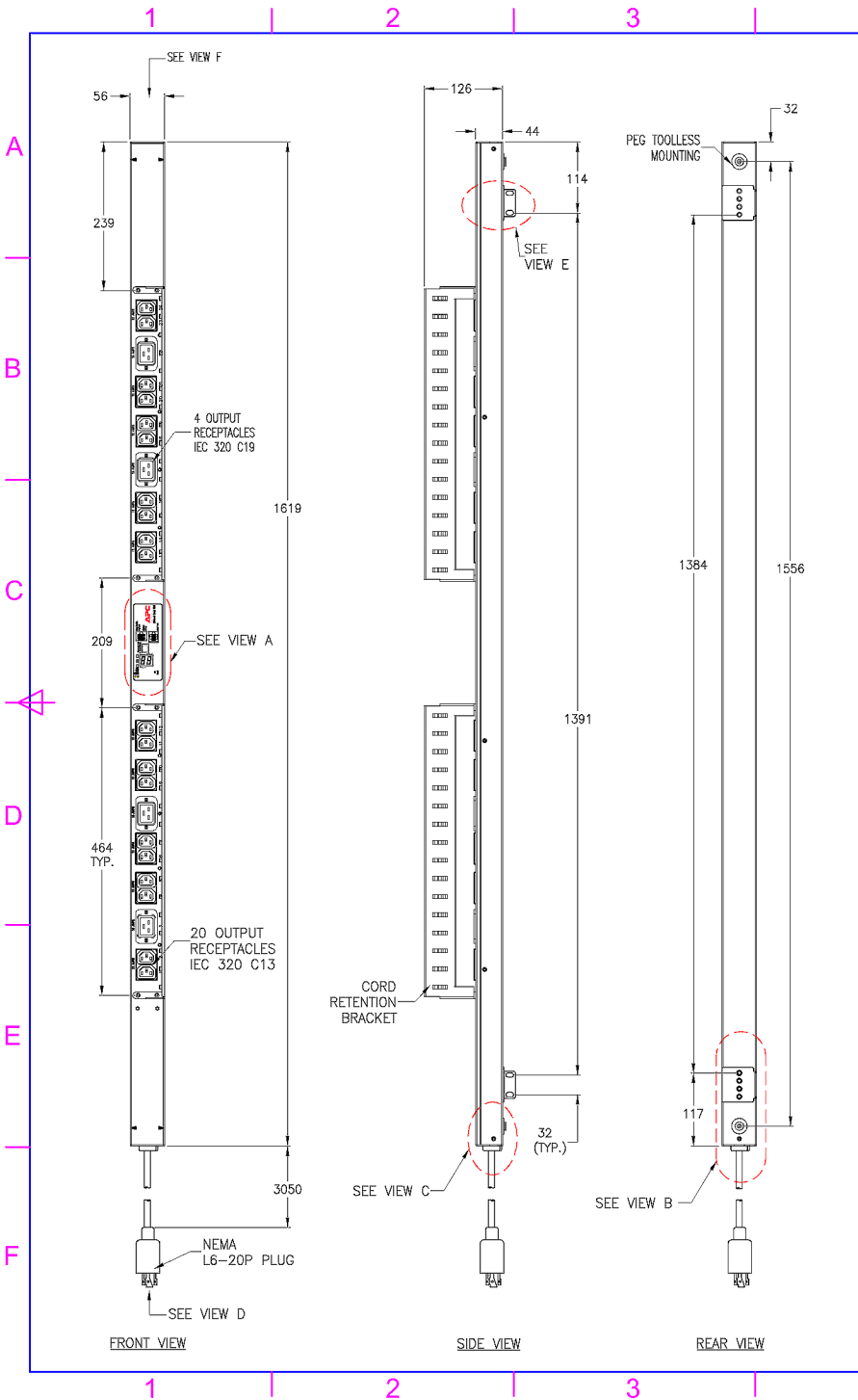
Net Weight	10.00 lbs. (4.55 kg)
Maximum Height	63.75 inches (1619 mm)
Maximum Width	2.19 inches (56 mm)
Maximum Depth	1.73 inches (44 mm)
Shipping Weight	17.00 lbs. (7.73 kg)
Shipping Height	84.00 inches (2134 mm)
Shipping Width	6.00 inches (152 mm)
Shipping Depth	5.00 inches (127 mm)
Color	Black

# Environmental

Operating Environment	32 - 113 °F (0 - 45 °C)
Operating Relative Humidity	0%
Operating Elevation	0-10000 feet (0-3000 meters)
Storage Temperature	-13 - 149 °F (-25 - 65 °C)
Storage Relative Humidity	0%
Storage Elevation	0-50000 feet (0-15000 meters)

# Conformance

Regulatory Approvals	cUL Listed,CSA C22.2 No. 60950-1-03,FCC Part 15 Class A,ICES-003,Industry Canada,UL 60950-1,UL Listed,VCCI Class A
Standard Warranty	2 years repair or replace
ROHS/WEEE Compliance	RoHS 7b Exemption



- NOTES:**
1. ALL DIMENSIONS ARE IN MILLIMETERS.
  2. NET WEIGHT IS 4.55 kg.
  3. UNIVERSAL MOUNTING BRACKET IS AN ALTERNATIVE MOUNTING METHOD TO THE TOOLLESS MOUNT FOR NON APC RACKS.
  4. BRACKET KITS TO MOUNT TO SPECIFIC COMPETITORS RACKS ARE AVAILABLE AS OPTIONS.
  5. INSTALLATION MUST COMPLY WITH ALL APPLICABLE NATIONAL AND LOCAL CODES.

THIS DRAWING AND SPECIFICATIONS HEREIN ARE THE PROPERTY OF AMERICAN POWER CONVERSION AND SHALL NOT BE COPIED, REPRODUCED OR USED IN WHOLE OR IN PART, AS THE BASIS FOR THE MANUFACTURE OR SALE OF ITEMS WITHOUT WRITTEN PERMISSION FROM APC.  
 THIS DRAWING IS BASED UPON LATEST AVAILABLE INFORMATION AND IS SUBJECT TO CHANGE WITHOUT NOTICE.



PROJECT		SUBMITTAL DRAWING	
CHECKED	C. KRISHNA	SCALE	
ENGINEER	T. HORSTMANN	3rd ANGLE PROJECTION	
	J. SUN		

TITLE		RACK PDU, METERED	
DESCRIPTION		ZERO U, 20A, 200/208V, INPUT: NEMA L6-20P OUTPUT: (20)IEC 320 C13 & (4)IEC 320 C19 MECHANICAL DETAILS	
DWG NO	AP7840	Sheet No.	REV.
		1 / 1	-